



## TABLE OF CONTENTS

|   |    |
|---|----|
| INTRODUCTION .....                                    | 2  |
| SPEED TRAPS .....                                     | 2  |
| DESCRIPTION OF THE QUINTEZZ LOCATOR .....             | 2  |
| INSTALLATION IN THE CAR .....                         | 3  |
| A. GPS ANTENNA .....                                  | 3  |
| B. QUINTEZZ LOCATOR .....                             | 3  |
| C. POWER SUPPLY .....                                 | 3  |
| OPERATION OF THE QUINTEZZ LOCATOR IN THE CAR .....    | 3  |
| A. AUTOMATIC TEST .....                               | 3  |
| B. LOOKING FOR SATELLITES .....                       | 3  |
| C. HIGHWAY MODE .....                                 | 4  |
| D. SETTING THE MAXIMUM SPEED .....                    | 4  |
| E. COMPASS .....                                      | 4  |
| F. INDICATION OF DANGEROUS LOCATIONS .....            | 4  |
| G. ENTERING/DELETING A NEW LOCATION .....             | 4  |
| PC OPERATING THE QUINTEZZ LOCATOR .....               | 5  |
| A. INTRODUCTION .....                                 | 5  |
| B. CONNECTING THE LOCATOR TO THE PC .....             | 5  |
| C. INSTALLING THE SOFTWARE .....                      | 5  |
| D. THE WEBSITE, AND THE EXCHANGE OF INFORMATION ..... | 6  |
| E. USE OF THE SOFTWARE .....                          | 7  |
| MAINTENANCE, DIRECTIVES AND TIPS .....                | 9  |
| A. REPLACING THE FUSE .....                           | 9  |
| B. ENVIRONMENT .....                                  | 10 |
| C. THEFT .....  | 10 |
| D. GUARANTEE .....                                    | 10 |

## INTRODUCTION

### **Congratulations !**

You are now the proud owner of one of the world's most advanced GPS products.

Read this manual carefully before the installation. All instructions are to be followed to ensure a maximum functioning and a trouble-free use of your QUINTEZZ LOCATOR.

Using the QUINTEZZ LOCATOR offers you more safety while driving because it signals occasional inattentions. The QUINTEZZ LOCATOR does not give you the right to exceed the speed limits. Always make sure you drive carefully !

This manual provides you with some details on how to install the QUINTEZZ LOCATOR in the car, the use and functioning in the car, and the possibilities to exchange the newest data on locations with other users, through your computer and Internet.

Furthermore, you have a free, life-long licence to download the newest available data on locations in your QUINTEZZ LOCATOR!

## SPEED TRAPS

Speed controls can be effected in many different ways. Frequently used speed-trap methods are radar-flash guns, laser guns, mobile radar monitors and route monitors.

A radar detector is able to detect some of these traps, but not all of them. The new generation of radar speed traps are increasingly hard to detect by means of a radar detector. Furthermore, the radar detector is forbidden in many countries. False alarms occur on a regular basis with each and every radar detector.

The QUINTEZZ LOCATOR is the perfect solution. This advanced GPS device signals speed violations, locations, and in addition offers an electronic compass.

### **ATTENTION:**

**The QUINTEZZ LOCATOR is not a navigation system indicating you the route from A to B through audiotext.**

## DESCRIPTION OF THE QUINTEZZ LOCATOR

- a. Port for GPS antenna
- b. Port for data cable to the computer
- c. Setting button – The maximum speed and the PC port can be set by means of this button
- d. On/Off button and Volume control
- e. Securing device for mounting clamp
- f. Port for cigarette plug or adapter
- g. Mute button – Allows you to turn off the audiotext
- h. Memory button – Allows you to manually add new locations where from now on warnings will be given.
- i. Mounting clamp
- j. Manual
- k. Cable clips
- l. Data cable
- m. External GPS antenna
- n. Adapter
- o. Velcro fastening strip
- p. Feeder cable with cigarette plug
- q. CD with PC software
- r. Non-Radar statement

## INSTALLATION IN THE CAR

### A. GPS ANTENNA

GPS signals are received through the external GPS antenna. It is important to choose the best location for it, so that the GPS signal is received loud and clear. The following elements should be taken into consideration:

- The antenna is to be placed at least 50 cm away from the QUINTEZZ LOCATOR.
- The antenna is to be placed at the outside of the car for optimal reception. With diverse cars with metal film – glass, a proper reception inside the car is impossible.
- The antenna is to be placed on a metal part, so as to be able to use the incorporated magnet.
- Once the antenna is placed, the power socket of the antenna cable is to be plugged into the ANT port.

**OBSERVATION:** The antenna may still move, as a result of many causes, such as blown off branches, parking along bushes etc. As these things cannot be controlled, any guarantee on the car is out of the question.

### B. QUINTEZZ LOCATOR

The QUINTEZZ LOCATOR is especially designed for use in the car and does not necessarily need to be placed directly behind the windscreen (like with a radar detector or a hand-held GPS). GPS signals are received through the external antenna.

The information display of the QUINTEZZ LOCATOR is to be clearly visible to the driver.

There are 2 possibilities to install the QUINTEZZ LOCATOR :

#### 1. Velcro strips

When using velcro strips for mounting, the surfaces of the QUINTEZZ LOCATOR and the dashboard must fit to one another and be clean (greaseproof).

#### 2. Mounting clamp

The supplied mounting clamp can be used for window mounting (by means of the supplied suction pads) or for screwing (screws and other fastening material is not supplied) onto the dashboard. After fastening, the mounting clamp is to be secured by means of the securing button at the bottom of the QUINTEZZ LOCATOR.

### C. POWER SUPPLY

The QUINTEZZ LOCATOR is designed to be connected to the normal electric circuit (12 Volts) of the car, which has a negative earthing. See the manual of your car, if you are not sure about the polarity.

After installation of the GPS antenna and the QUINTEZZ LOCATOR, the power cable is to be plugged into the POWER port.

Then you remove the cigarette lighter and insert the cigarette plug into this contact.

## OPERATION OF THE QUINTEZZ LOCATOR IN THE CAR

### A. AUTOMATIC TEST

After being switched on, the QUINTEZZ LOCATOR will perform an automatic self test. If you hear the audiotext 'QUINTEZZ LOCATOR Self Test OK', the test has been properly performed. If the audiotext has been switched off, the above statement will not be heard.

### B. LOOKING FOR SATELLITES

Once the automatic test has been performed, the LOCATOR will try to contact the GPS satellites. The display will show either 3 minuses or will indicate the status by means of the letter A followed by the number of satellites with which connections have been realized.

As soon as a connection has been established with at least 4 satellites, the QUINTEZZ LOCATOR is able to execute a reliable positioning, and all functions of the QUINTEZZ LOCATOR are available. The QUINTEZZ LOCATOR will keep connected with 4 to 12 satellites. If the connection is shortly cut (for example when passing through flyunders and tunnels) the speed indicator will show an incorrect value for a short while.



## Quintezz Locator

**ATTENTION:** The first time the QUINTEZZ LOCATOR is switched ON, it can take about 15 minutes to catch the satellites.

### C. SPEED INDICATION

The display indicates the real speed in Km/h.

The QUINTEZZ LOCATOR is the perfect solution to prevent you from speeding a few kilometres by accident. You simply enter a maximum speed on the QUINTEZZ LOCATOR. As soon as you exceed that speed, you will get a warning ('Speed Alert').

### D. SETTING THE MAXIMUM SPEED

- The maximum speed can be set by shortly pressing the 'setting' button during operation in the car.
- The display will now show the set maximum speed.
- With the 'memory  $\Delta$ ' button you can raise this setting in 10 km/h steps, and with the 'mute  $\nabla$ ' button you can lower it.
- If the maximum speed is set at 0 Km/h, the speed alert is switched off.

### E. COMPASS

The QUINTEZZ LOCATOR is also equipped with an electronic compass with a capacity of 8 different directions (N – NE – E – SE – S – SW – W – NW). This is visualized in the compass rose of the QUINTEZZ LOCATOR. This compass prevents you from losing your sense of direction in unknown areas.

### F. INDICATION OF DANGEROUS LOCATIONS

It is important for your safety that dangerous locations are indicated. On a location where speed controls are organized, sometimes people hit the brakes unexpectedly. Therefore, these locations are indicated by the QUINTEZZ LOCATOR 500 metres ahead. Mobile controls are not performed on a fixed spot, and therefore are not indicated by the QUINTEZZ LOCATOR.

The advanced processor controlled GPS system does not only record the location as such, but also the traffic stream. If there is a dangerous location on the uphill carriageway, no warning will be given on the downhill carriageway. This function is important in order to avoid any false alarms.

The audiotext in case of a dangerous location can be:

'Camera', 'Two way Camera', 'Dangerous Location', 'Track control', 'Track control end', 'Warning One', 'Warning Two'.

Next to the spoken text, you will also hear a ringer sound, the LED with the letter 'S' (for system data) will light up and the distance in meters to the location is descending.

### G. ENTERING/DELETING A NEW LOCATION

You can manually add and delete locations from the QUINTEZZ LOCATOR memory. These locations are called 'users data' and can be exchanged with other people using the QUINTEZZ LOCATOR through the forum on [www.quintezz.com](http://www.quintezz.com).

- If you want to manually add a location, you are to shortly press the 'memory' button on that location.
- The QUINTEZZ LOCATOR will confirm the saving of this location by stating 'Saving Data'.
- It is possible to delete a manually added location.
- To this effect, the 'memory' button is to be pressed on the respective location. The location is then deleted.
- The deleting process is confirmed by stating 'Deleted Data'.
- The memory for users data has a capacity of 500 locations. If it is not possible to save data, the message 'Not saved' will appear.
- The manually entered locations are indicated with the text 'Watch out'. Also a ringing signal is heard, the letter 'U' (for Users data) will light up and the distance in meters to the location is descending.

## PC OPERATING THE QUINTEZZ LOCATOR

### A. INTRODUCTION

The supplied CD-ROM contains software to exchange data between the QUINTEZZ LOCATOR and the PC. These data are the 2 kinds of locations: Users data (which are manually entered by the users) and System data (which are provided by QUINTEZZ).

A maximum of 7,500 system locations and 500 user locations can be entered in the LOCATOR. When saving new system data, the old system data are deleted.

### B. CONNECTING THE LOCATOR TO THE PC

- The QUINTEZZ LOCATOR is supplied with an adapter and a data cable.
- The adapter is to be inserted into a socket and is to be connected with the POWER port of the QUINTEZZ LOCATOR.
- The data cable is to be connected with the PC port of the QUINTEZZ LOCATOR and the serial port of the PC (COM 1 or COM 2 or COM A or COM B or |0|0|).
- In order to set the QUINTEZZ LOCATOR for PC operation, you have to press the LOCATOR 'setting' button (after switch-on) for 6 seconds, until a ringing signal is heard.
- On the LOCATOR display, three zeros will slowly blink.

### C. INSTALLING THE SOFTWARE

The supplied CD-ROM contains the SETUP programme. By means of this programme, the PC software is installed. This software is tested with the operating systems as indicated on the CD. It is impossible to test the QUINTEZZ software combination with all the present and future programmes. That is why it is excluded from any guarantee.

When starting the SETUP programme, the following display will appear:



The display indicates that any other applications are to be switched off. As soon as this is done, you click OK and the following display will appear:

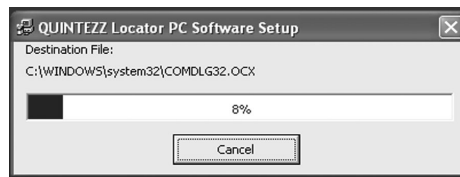


## Quintezz Locator

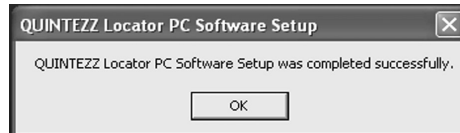
The installation programme will recommend a location to install the programme. When you agree, you press the big square button picturing a PC with a box. After that, the following appears:



The offered programme group in the Windows Start menu is indicated. If you agree, you click on 'Continue', and the software is actually installed. The following appears:



As soon as the installation is completed with success, the following message will appear:



You can now start the software by means of the Windows Start button, then you subsequently use: Programs, Quinteazz Locator PC Software, Quinteazz Locator PC Software.

### D. THE WEBSITE, AND THE EXCHANGE OF INFORMATION

You can manually add and delete locations from the QUINTEZZ LOCATOR memory. These locations are called 'users data', and can be exchanged with other people using the QUINTEZZ LOCATOR through the forum of [www.quinteazz.com](http://www.quinteazz.com).

QUINTEZZ has also gathered data on locations. These data are updated on a regular basis with the data that are placed on the forum by the users, and that can be checked by QUINTEZZ. These data are available per country or group of countries on [www.quinteazz.com](http://www.quinteazz.com).

The proper functioning of your PC with Internet, the downloading of data etc. goes beyond the QUINTEZZ LOCATOR guarantee. On [www.quinteazz.com](http://www.quinteazz.com) you can view product information online, purchase products and visit the forum. A forum is a meeting place where data on a certain subject are exchanged. Users can exchange new data of locations, can ask each other questions, can make suggestions etc. All owners of a QUINTEZZ LOCATOR can freely sign on as a forum member so as to add information. The information on the forum is also available for non-members.

**D-1. REGISTRATION IN THE FORUM**

Before being able to place some data on the forum, you are to sign on as a member once. Therefore you need to give the serial number of your QUINTEZZ LOCATOR, your e-mail address and other relevant information.

How to use the forum is explained by means of a film that is available on the CD-ROM. You can start the film by double-clicking the 'FORUM' file on the CD-ROM.

**D-2. PLACING DATA ON THE FORUM**

When you register with the forum, you can react to subjects on the forum. If you want to add a new subject on the forum, you need to enclose a file with locations, because the purpose of the forum is the exchange of locations.

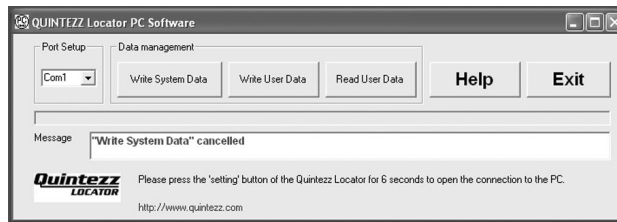
**D-3. SAVING DATA FROM THE FORUM**

Everyone visiting the forum, can download locations from the forum.

**E USE OF THE SOFTWARE**

Before being able to use the software, you need to comply with the following conditions:

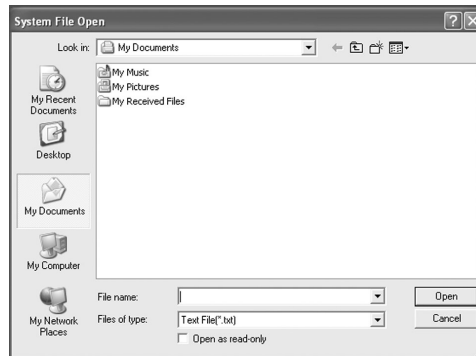
- The Locator is on.
- The Locator is connected to the PC.
- The 'setting' button of the Locator is pressed for 6 seconds, until the ringing signal is heard. In the Locator display three zeros are slowly blinking.
- The Quintezz Locator software is installed on the PC.
- The Quintezz Locator software is started. The following will appear:



By default, COM 1 is selected for communication. When it is necessary to use COM 2, this has to be selected in the main screen. After the selection the software needs to be restarted.

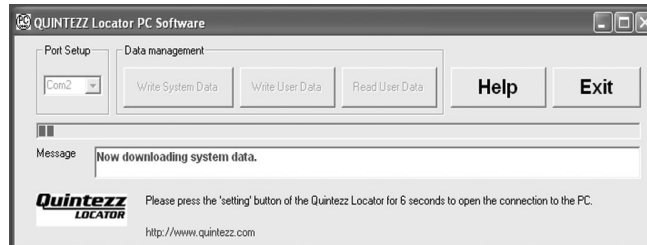
**E-1. WRITE QUINTEZZ DATA**

By means of the PC software, you can save QUINTEZZ data in the LOCATOR. The old QUINTEZZ data are automatically deleted. By pressing the 'Write System Data' button, this function is started and the following will appear on the display:



## Quintezz Locator

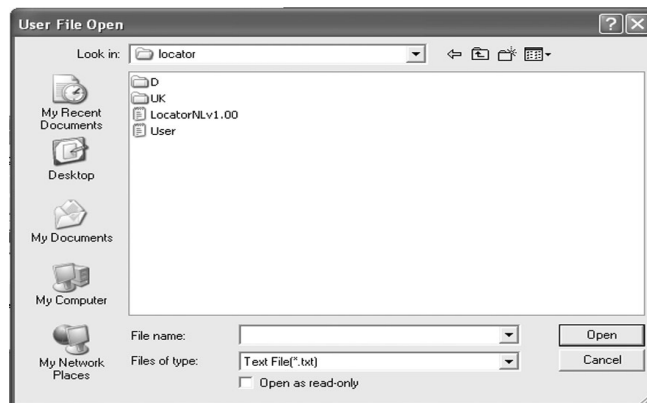
You are to indicate the file that you want to save in the QUINTEZZ LOCATOR. This file has to be on the PC hard disk, not on Internet nor on a network. Once the correct file is chosen, the file is saved in the LOCATOR and the following display appears:



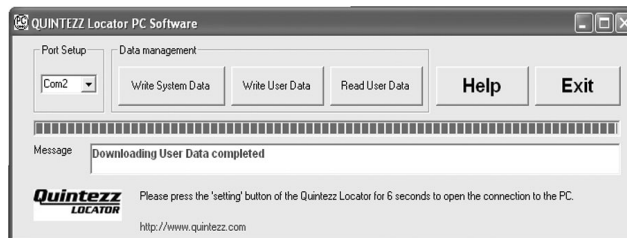
The transfer of many thousands of locations can take a while (up to 30 minutes). The saving of data cannot be interrupted. This can lead to software failures.

### E-2. WRITE USER DATA

By means of the 'Write User Data' button, you can add users data to your QUINTEZZ LOCATOR. The old users data are **not** deleted. If the number of locations in the users memory of the QUINTEZZ LOCATOR exceeds 500, the oldest locations are deleted. If you click the 'Write User Data' button, the following display appears:



Once you have chosen the correct file with users data in this display, these data are saved into the LOCATOR. This file has to be on the PC hard disk, not on internet nor on a network. If all data are saved in the QUINTEZZ LOCATOR, the following display will appear:

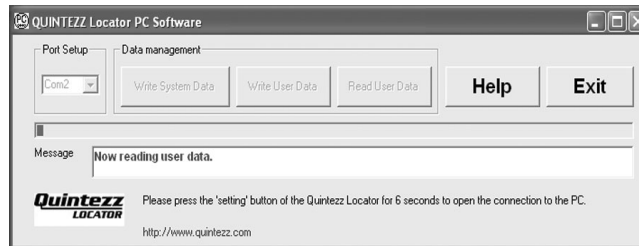




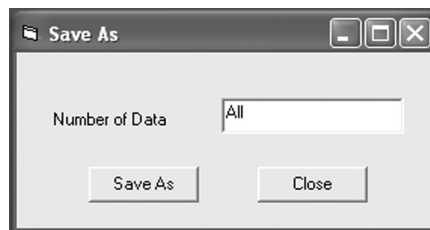
**E-3. READ USER DATA**

As users data can be freely exchanged between the users, it is also possible to download the users data from the QUINTEZZ LOCATOR into the PC.

If you press the 'Read User Data' button, all users data are sent from the QUINTEZZ LOCATOR to the PC. The following display appears:



These data can be used to make your new locations available to others. These new locations will be the last to be added to the Users memory of your QUINTEZZ LOCATOR. So, in the following display you will be able to choose either to save all locations, or for example only the last 3 new locations:



Once you have decided to save everything (in this case you do not have to change anything) or a specified number of locations, you click 'Save as'. Here you indicate under which name and where on the PC you would like the file to be saved. The data are now available on the PC and can be exchanged with other users.

**E-4. HELP FUNCTION**

The help function is intended for clarification. If the 'help' button is clicked, a copy of the QUINTEZZ LOCATOR PC Software is started. This copy does not operate, but it provides information on all the buttons that are clicked.

**E-5. CLOSE**

With the 'Close' button the programme is closed. When data are transferred between the PC and the QUINTEZZ LOCATOR, closing can lead to software failures. That is why after having clicked the 'close' button, you are to confirm once again that you really want to close. After closing the QUINTEZZ LOCATOR PC Software, you can also switch off the LOCATOR by means of the little wheel on the side.

**MAINTENANCE, DIRECTIVES AND TIPS**

**A. REPLACING THE FUSE**

In the cigarette plug of the QUINTEZZ LOCATOR there is a fuse. If you loosen the screw cap of the cigarette plug, you can replace the fuse. The fuse is always to be replaced with a fuse of equal value.



## Quintezz Locator

### B. ENVIRONMENT

The QUINTEZZ LOCATOR is a very advanced GPS system that is composed of high-quality components. Extreme low and high temperatures, heavy shocks etc are to be avoided. The QUINTEZZ LOCATOR cannot be exposed to direct sunlight for a long time.

### C. THEFT

Quintezz appliances are also attractive for people with not so good intentions. In order to prevent theft, we recommend not to leave the QUINTEZZ LOCATOR unattended in your car.

### D. GUARANTEE

The QUINTEZZ LOCATOR comes with a 2-years guarantee. If there are any problems or uncertainties, you can ask your questions through the forum on internet ([www.quintezz.com](http://www.quintezz.com)). If a product failure is established, you can go to the respective dealership and call in the guarantee, within 2 years of your purchase.

Excluded from the guarantee are eg.: Problems with your PC or Internet, damage to the car and fines.